

Rotary Joint 100 Series

Media Type
Coolant

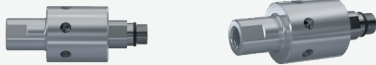
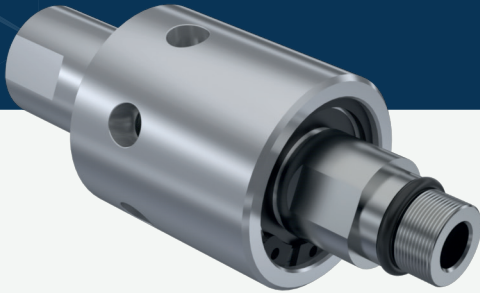
Max. Speed
8.000 RPM

Max. Pressure
40 BAR

Max. Temperature
70 °C

Connection Type
Metric

Rotor Size
**Metric 16x1,5 LH
Metric 16x1,5 RH**

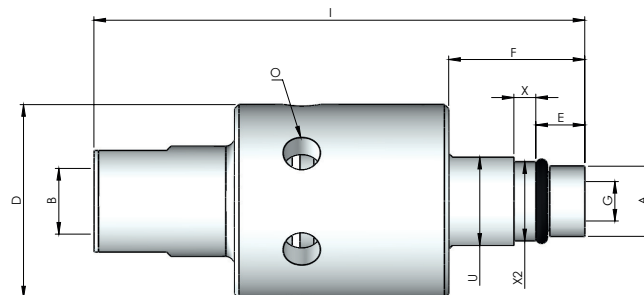


For CNC machines and vertical machining centers, rotating joints for boron oily water passage.

- ✓ For CNC machines and vertical machining centers
- ✓ Easy assembling, high rpm
- ✓ Drainage holes and many thread options Metric, BSP, NPT, UNF etc..
- ✓ Silicon Carbide sealing parts

! Do not operate without fluid.

DIMENSIONS



SIZE	MODEL NO	A	DØ	I	E	X	F	GØ	X2	U	O	KG
1/4" NPT	100-344-403	5/8" - 18 UNF - LH	44	112	11,15	5	31	8	17,993	20	8,50	0,33
1/4" BSP	100-444-531	M16 X 1,5 - LH	44	112	11,15	5	31	8	17,993	20	8,50	0,33
3/8" NPT	100-544-403	5/8" - 18 UNF - LH	44	112	11,15	5	31	9	17,993	20	8,50	0,33
3/8" BSP	100-644-531	M16 X 1,5 - LH	44	112	11,15	5	31	9	17,993	20	8,50	0,33