

# Rotary Joint 5000N Series

Media Type  
**Hydraulic Oil**

Max. Speed  
**1500 RPM**

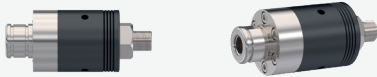
Max. Pressure  
**400 BAR**

Max. Temperature  
**90 °C**

Connection Type

Rotor Size

**BSP, BSPT, NPT, FL, Metric 1/8" DN06 - 1 1/2" DN40**

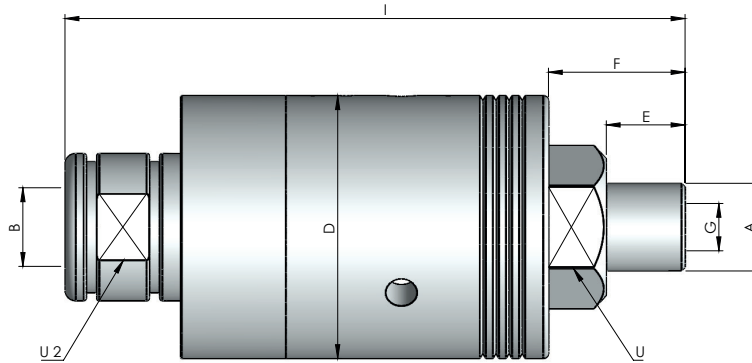


- ✓ Single flow design
- ✓ Balanced mechanical sealing
- ✓ Double way ball bearing (No lubricate)
- ✓ Drainage holes
- ✓ Stainless steel back cover & shaft
- ✓ Threaded connection (BSP, BSPP, NPT)

Rotary joint for high speed hydraulic applications

**!** Do not operate without fluid.

## DIMENSIONS



SIZE	B	MODEL NO	A	DØ	I	E	F	GØ	U	U 2	KG
6	1/8" BSPP	N5010-244-200	1/8" BSPP - RH	42	97,50	15	26	3,18	22	27	0,55
6	1/8" BSPP	N5010-244-201	1/8" BSPP - LH	42	97,50	15	26	3,18	22	27	0,55
8	1/4" BSPP	N5010-244-202	1/4" BSPP - RH	42	97,50	15	26	6,40	22	27	0,53
8	1/4" BSPP	N5010-244-203	1/4" BSPP - LH	42	97,50	15	26	6,40	22	27	0,53
10	3/8" BSPP	N5010-244-204	3/8" BSPP - RH	50	118	15	26	9	27	25	1
10	3/8" BSPP	N5010-244-205	3/8" BSPP - LH	50	118	15	26	9	27	25	1
15	1/2" BSPP	N5010-244-206	1/2" BSPP - RH	64	137	15	36	12	30	25	2
15	1/2" BSPP	N5010-244-207	1/2" BSPP - LH	64	137	15	36	12	30	25	2
20	3/4" BSPP	N5010-244-208	3/4" BSPP - RH	84	159	24	43	18	48	41	3,85
20	3/4" BSPP	N5010-244-209	3/4" BSPP - LH	84	159	24	43	18	48	41	3,85
25	1" BSPP	N5010-244-210	1" BSPP - RH	94	160	25	44,50	24	48	41	4,30
25	1" BSPP	N5010-244-211	1" BSPP - LH	94	160	25	44,50	24	48	41	4,30